

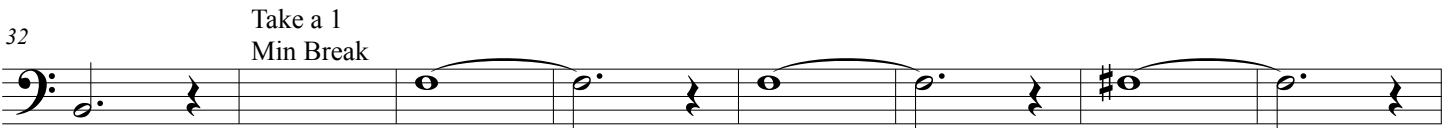
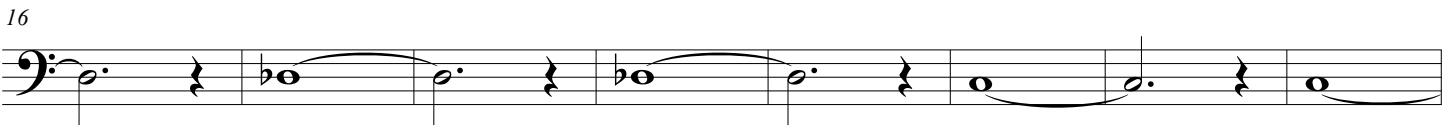
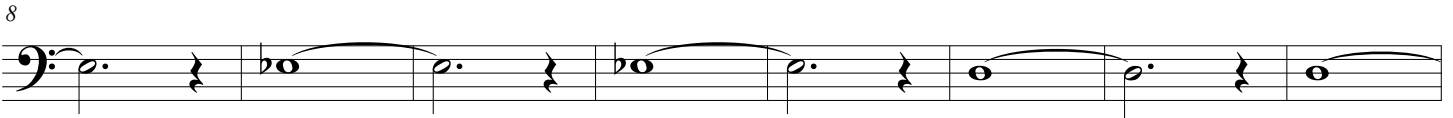
Summer Daily Routine

All Notes are marked with an accidental and are natural if not marked - Accidentals carry through the measure - time your breaks with a timer

Part 1 - Long Tones - Go for even and beautiful sound with ease of sound production - breathe on the rests

Compiled by Andrew Hill

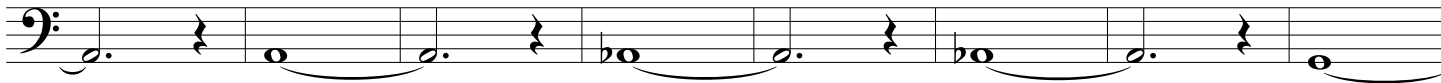
Quarter Note = 72 BPM



Summer Daily Routine

2

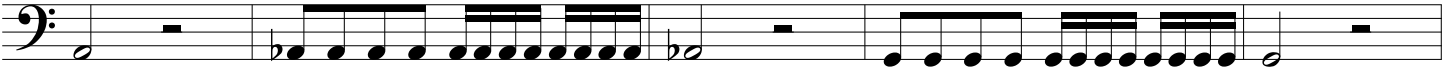
64



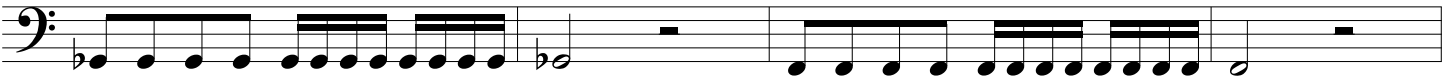
Summer Daily Routine

4

176



181

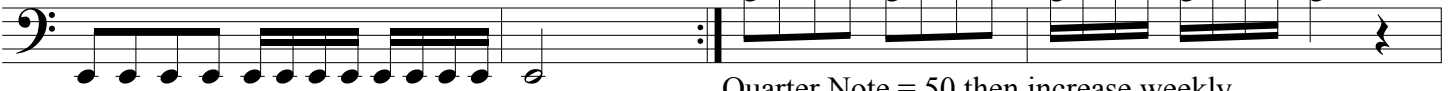


Part 3: Flexibility and High Register -

Take a 2 Min Break between repeats and before next section

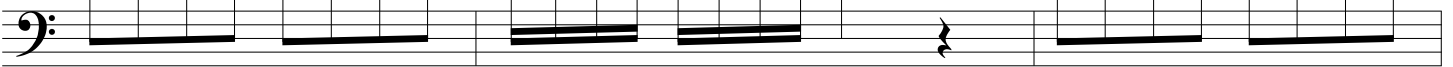
Only tongue the notes with tenuto marks above them

185



Quarter Note = 50 then increase weekly

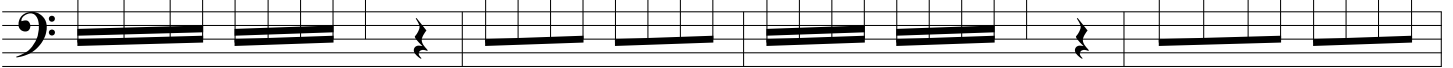
189



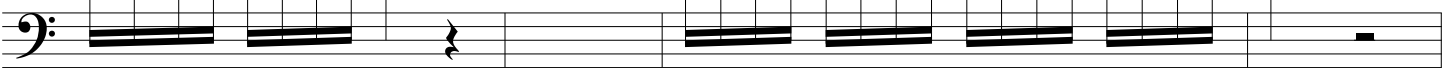
192



196

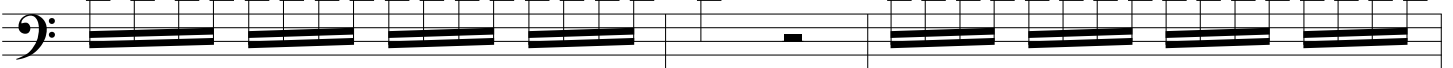


200



Take a 5 Min Break

204



All in 3rd Position
or with 1st valve

Summer Daily Routine

207

Measures 207-210: A musical staff in bass clef with a key signature of two flats (Bb, Eb). Measure 207 contains a whole rest. Measures 208-210 contain a continuous eighth-note scale starting on Bb. A slur covers measures 208-210, and a fermata is placed over the final note in measure 210.

All in 2nd Position or with 2nd
valve

All in 1st Position or with the open horn

210

Measures 210-212: A musical staff in bass clef with a key signature of two flats. Measure 210 contains a continuous eighth-note scale starting on Bb, with a sharp sign (#) above the second note (C). A slur covers measures 210-212, and a fermata is placed over the final note in measure 212.

213

Take a 5 Min Break

Measures 213-216: A musical staff in bass clef with a key signature of two flats. Measure 213 contains a whole rest. Measures 214-216 contain a continuous eighth-note scale starting on Bb. A slur covers measures 214-216, and a fermata is placed over the final note in measure 216.

217

Measures 217-218: A musical staff in bass clef with a key signature of two flats. Measures 217-218 contain a continuous eighth-note scale starting on Bb. A slur covers measures 217-218, and a fermata is placed over the final note in measure 218.

219

Measures 219-220: A musical staff in bass clef with a key signature of two flats. Measures 219-220 contain a continuous eighth-note scale starting on Bb. A slur covers measures 219-220, and a fermata is placed over the final note in measure 220.

All in 3rd Position or with 1st valve

221

Measures 221-222: A musical staff in bass clef with a key signature of two flats. Measures 221-222 contain a continuous eighth-note scale starting on Bb. A slur covers measures 221-222, and a fermata is placed over the final note in measure 222.

All in 2nd Position or with 2nd valve

223

Measures 223-224: A musical staff in bass clef with a key signature of two flats. Measures 223-224 contain a continuous eighth-note scale starting on Bb, with sharp signs (#) above the second and eighth notes (C and G). A slur covers measures 223-224, and a fermata is placed over the final note in measure 224.

All in 1st Position or with the open horn

225

Measures 225-226: A musical staff in bass clef with a key signature of two flats. Measures 225-226 contain a continuous eighth-note scale starting on Bb. A slur covers measures 225-226, and a fermata is placed over the final note in measure 226.